

# Spectrum Test Report

## Sample Info.:

Name:4995

SN:001

Date:2019-09-06

TMP:25.3 DEG

Remark:-----

Type:S-1

Manu:EVERFINE

Tester:Admin

Humidity:65 %RH

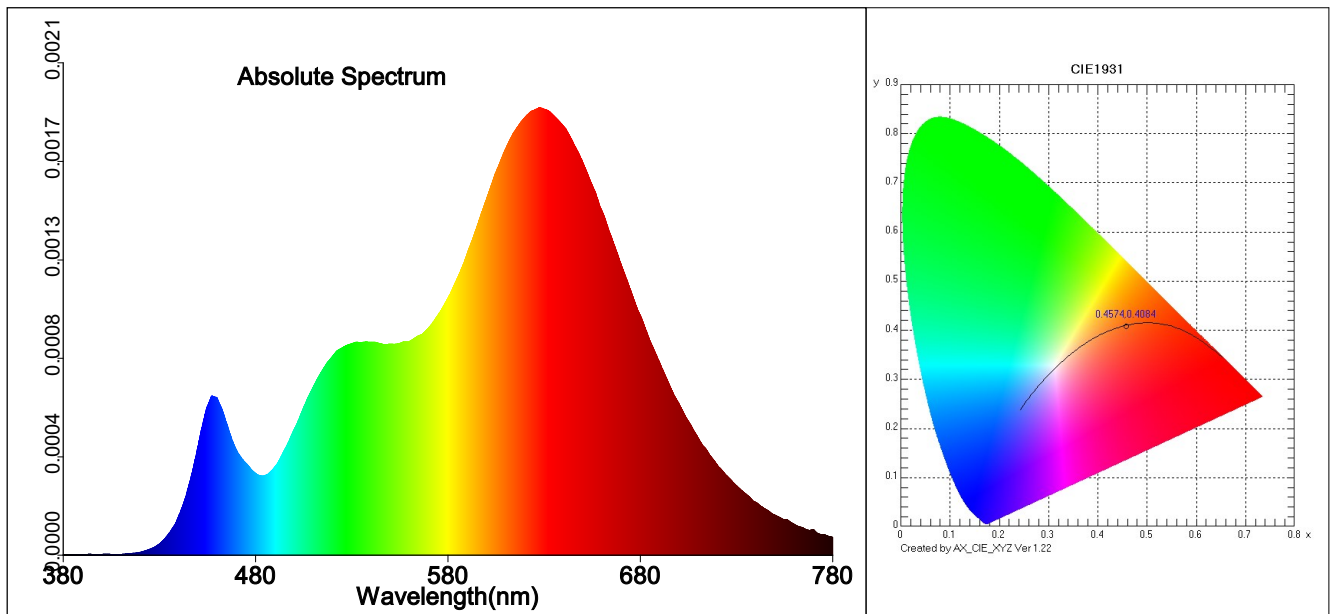
## Meter state:

Test Meter: SPIC-200

Integral T: 5841 ms

PeakAD Ip: 47905.3

Average times: 1



## Test parameter:

E= 90.97 lx

CIE x= 0.4574

Tc=2718 K

Pur=59.9 %

Duv=-0.00060

Ra=93.1

R4= 99

R8= 77

R12= 89

E(fc)=8.45464 fc

CIE y= 0.4084

Lp=615.0 nm

Ratio\_R=27.1 %

S/P=1.35

R1= 97

R5= 99

R9= 51

R13= 99

Ee=0.30405 W/m2

CIE u'=0.2619

HW=109.2 nm

Ratio\_G=70.2 %

R2= 99

R6= 92

R10= 97

R14= 98

CIE v'=0.5261

Ld=584.3 nm

Ratio\_B=2.7 %

R3= 94

R7= 88

R11= 94

R15= 88

SDCM= 1.4(2700K/ELR)

White Class:OUT

Result:Quality

TM30: Rf = 91, Rg = 99

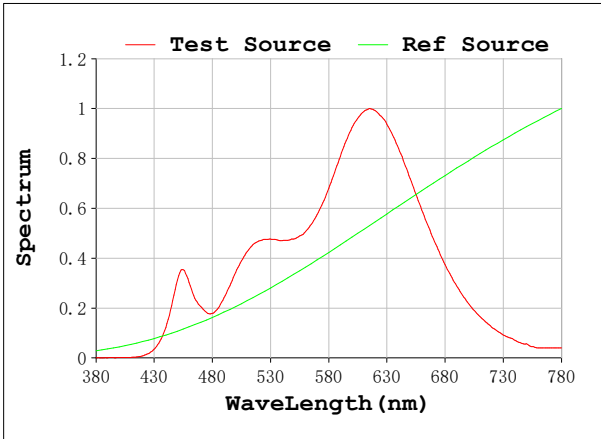
CQS: Qa = 91

GAI: GAI\_EES = 49, GAI\_BB8 = 100, GAI\_BB15 = 105

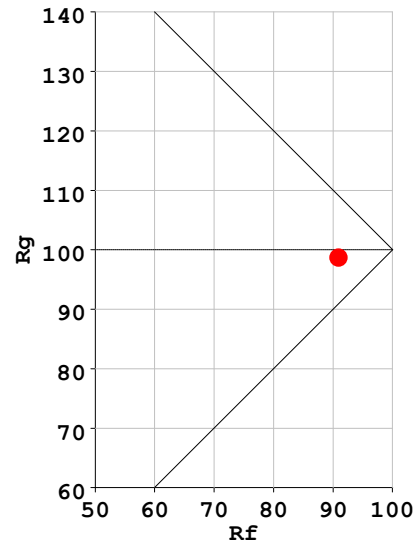
TLCI: TLCI = ---

**SPECTRAL POWER DISTRIBUTION COMPARISON**

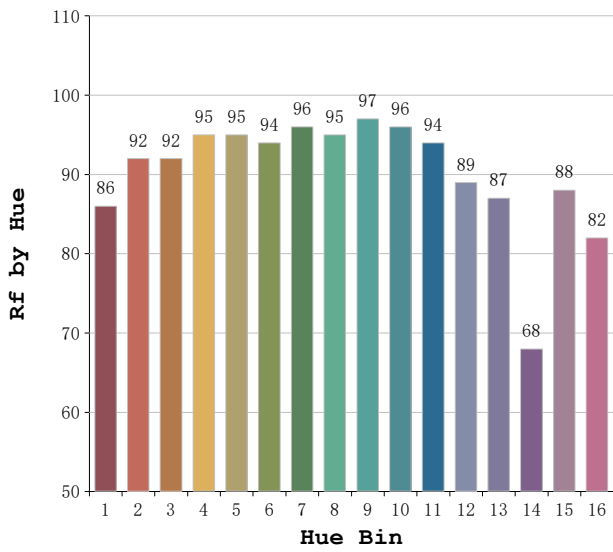
Rf: 91      CCT: 2718 K      u': 0.2619  
 Rg: 99      Duv: -0.0006      v': 0.5261



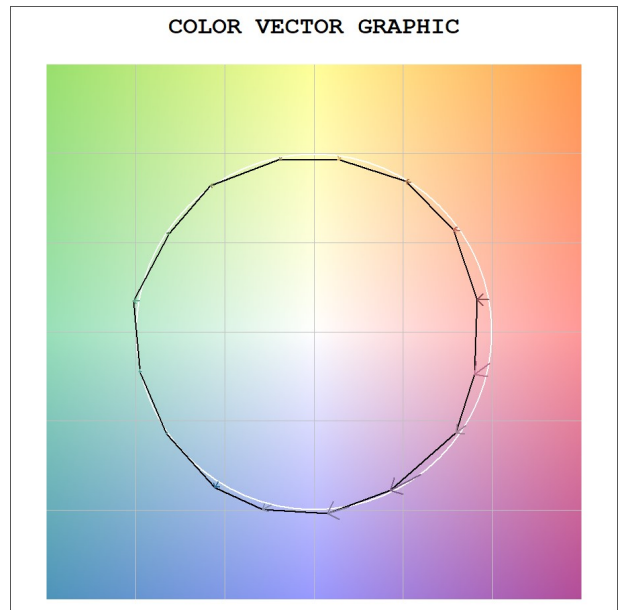
**Rf-Rg PLOT**

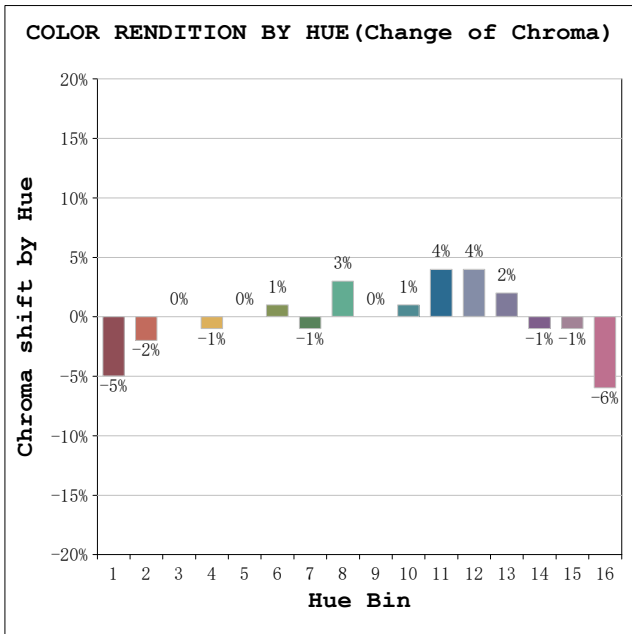


**COLOR RENDITION BY HUE (Fidelity Index)**



**COLOR VECTOR GRAPHIC**





**HUE ANGLE ANALYSIS**

Hue Bin	Hue Angle	Rf	Graphic shift (%)	
			Chroma	Hue
1	0.0° - 22.5°	86	-5	1
2	22.5° - 45.0°	92	-2	3
3	45.0° - 67.5°	92	0	3
4	67.5° - 90.0°	95	-1	-1
5	90.0° - 112.5°	95	0	1
6	112.5° - 135.0°	94	1	2
7	135.0° - 157.5°	96	-1	0
8	157.5° - 180.0°	95	3	1
9	180.0° - 202.5°	97	0	2
10	202.5° - 225.0°	96	1	1
11	225.0° - 247.5°	94	4	0
12	247.5° - 270.0°	89	4	-3
13	270.0° - 292.5°	87	2	-12
14	292.5° - 315.0°	68	-1	-18
15	315.0° - 337.5°	88	-1	-5
16	337.5° - 360.0°	82	-6	-6