

Spectrum Test Report

Sample Info.:

Name:4995N

SN:001

Date:2013-01-01

TMP:25.3 DEG

Remark:-----

Type:S-1

Manu:EVERFINE

Tester:Admin

Humidity:65 %RH

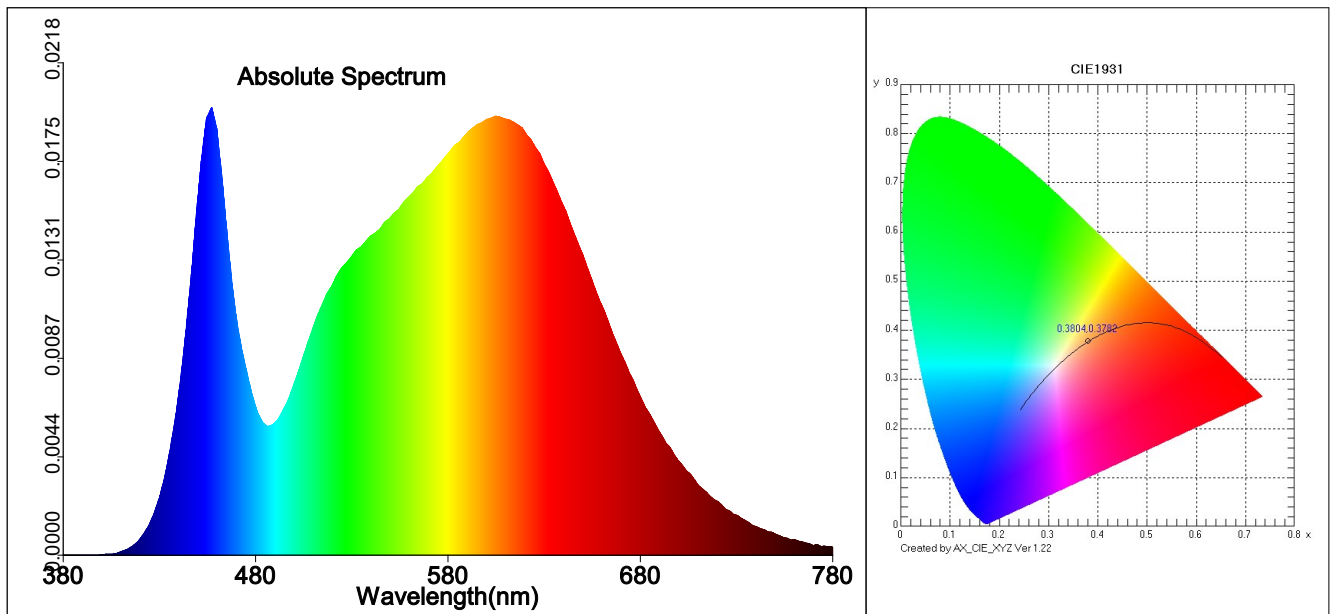
Meter state:

Test Meter: SPIC-200

Integral T: 485 ms

PeakAD Ip: 44848.5

Average times: 1



Test parameter:

E= 1239.89 lx

CIE x= 0.3804

Tc=4012 K

Pur=27.7 %

Duv=0.00070

Ra=83.3

R4= 82

R8= 65

R12= 62

E(fc)=115.231 fc

CIE y= 0.3782

Lp=453.0 nm

Ratio_R=18.3 %

S/P=1.69

R1= 82

R5= 82

R9= 10

R13= 84

Ee=3.76147 W/m2

CIE u'=0.2245

HW=26.0 nm

Ratio_G=78.1 %

R2= 89

R6= 85

R10= 74

R14= 97

CIE v'=0.5022

Ld=578.6 nm

Ratio_B=3.6 %

R3= 95

R7= 87

R11= 81

R15= 76

SDCM= 1.1(F4000)

White Class:OUT

Result:Quality

TM30: Rf = 82, Rg = 95

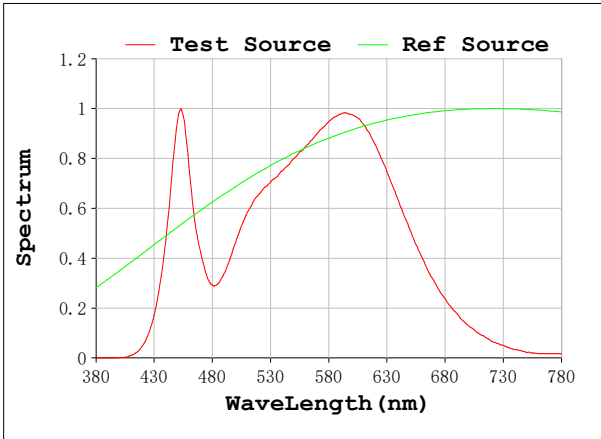
CQS: Qa = 83

GAI: GAI_EES = 73, GAI_BB8 = 92, GAI_BB15 = 98

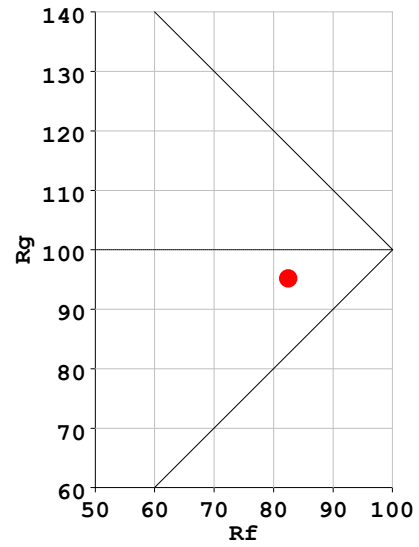
TLCI: TLCI = ---

SPECTRAL POWER DISTRIBUTION COMPARISON

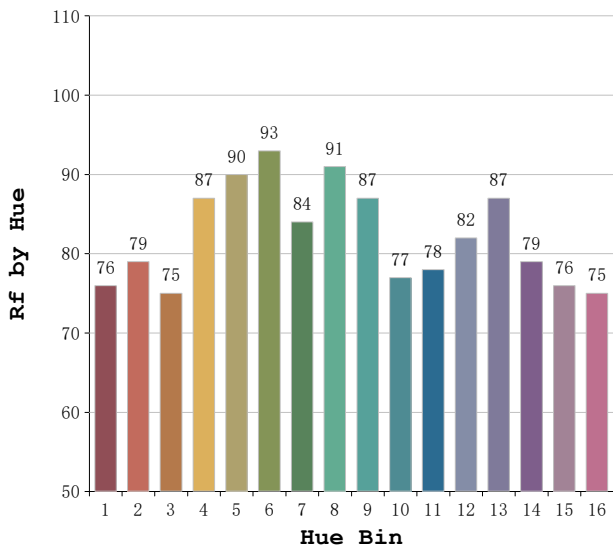
Rf: 82 CCT: 4012 K u': 0.2245
 Rg: 95 Duv: 0.0007 v': 0.5022



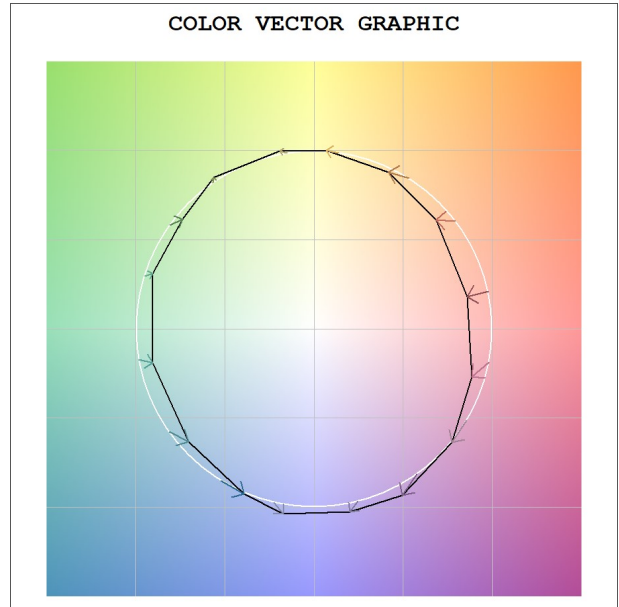
Rf-Rg PLOT

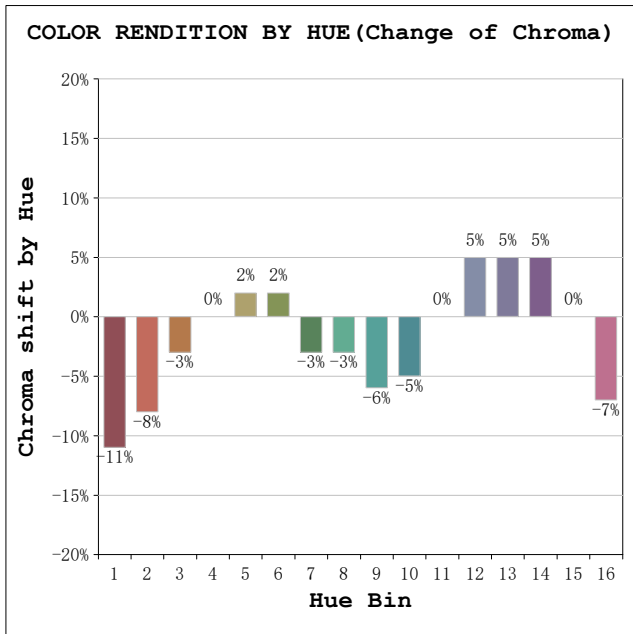


COLOR RENDITION BY HUE (Fidelity Index)



COLOR VECTOR GRAPHIC





HUE ANGLE ANALYSIS

Hue Bin	Hue Angle	Rf	Graphic shift (%)	
			Chroma	Hue
1	0.0° - 22.5°	76	-11	0
2	22.5° - 45.0°	79	-8	6
3	45.0° - 67.5°	75	-3	11
4	67.5° - 90.0°	87	0	7
5	90.0° - 112.5°	90	2	4
6	112.5° - 135.0°	93	2	-1
7	135.0° - 157.5°	84	-3	-6
8	157.5° - 180.0°	91	-3	-1
9	180.0° - 202.5°	87	-6	3
10	202.5° - 225.0°	77	-5	11
11	225.0° - 247.5°	78	0	15
12	247.5° - 270.0°	82	5	6
13	270.0° - 292.5°	87	5	-5
14	292.5° - 315.0°	79	5	-13
15	315.0° - 337.5°	76	0	-14
16	337.5° - 360.0°	75	-7	-9