

Spectrum Test Report

Sample Info.:

Name:4997N

SN:001

Date:2013-01-01

TMP:25.3 DEG

Remark:-----

Type:S-1

Manu:EVERFINE

Tester:Admin

Humidity:65 %RH

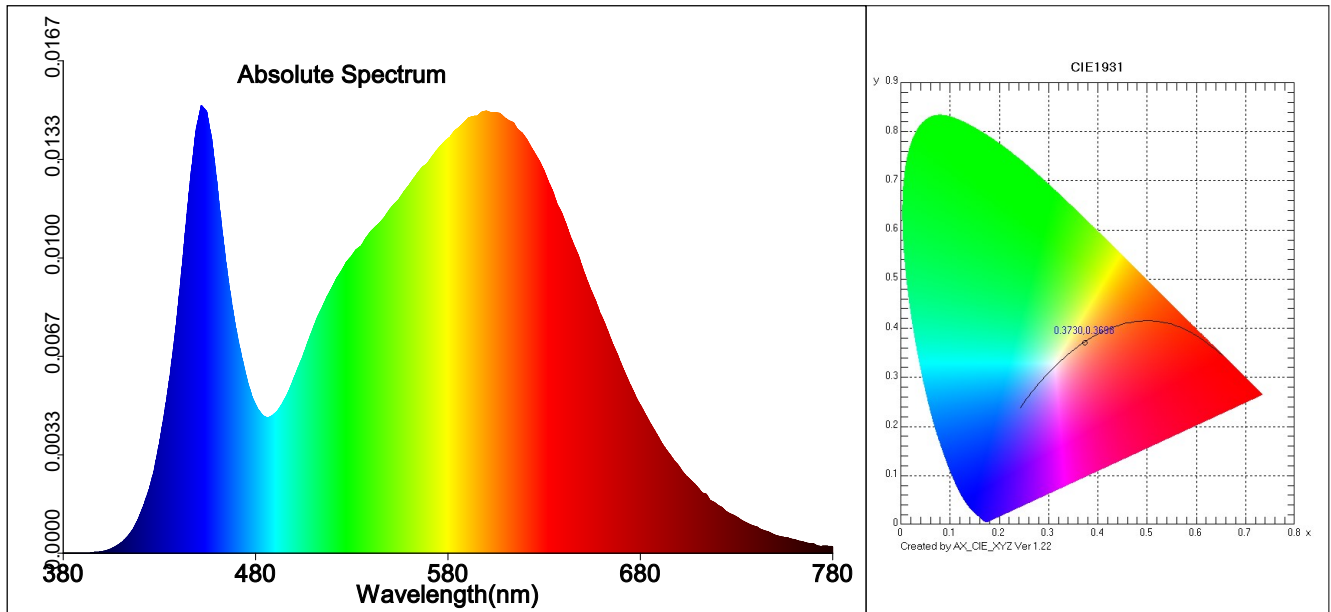
Meter state:

Test Meter: SPIC-200

Integral T: 695 ms

PeakAD Ip: 47351.4

Average times: 1



Test parameter:

E= 956.37 lx

CIE x= 0.3730

Tc=4161 K

Pur=22.9 %

Duv=-0.00103

Ra=81.5

R4= 81

R8= 64

R12= 64

E(fc)=88.8818 fc

CIE y= 0.3698

Lp=449.0 nm

Ratio_R=17.6 %

S/P=1.71

R1= 80

R5= 80

R9= 4

R13= 81

Ee=2.9157 W/m2

CIE u'=0.2230

HW=29.9 nm

Ratio_G=78.7 %

R2= 87

R6= 82

R10= 70

R14= 96

CIE v'=0.4974

Ld=579.1 nm

Ratio_B=3.7 %

R3= 93

R7= 85

R11= 79

R15= 74

SDCM= 3.9(F4000)

White Class:OUT

Result:Quality

TM30: Rf = 80, Rg = 96

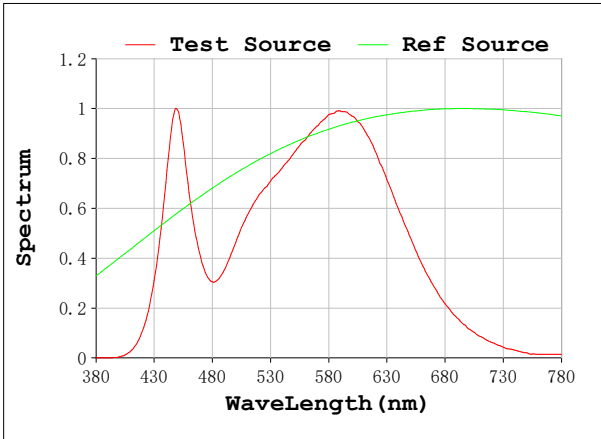
CQS: Qa = 80

GAI: GAI_EES = 76, GAI_BB8 = 94, GAI_BB15 = 98

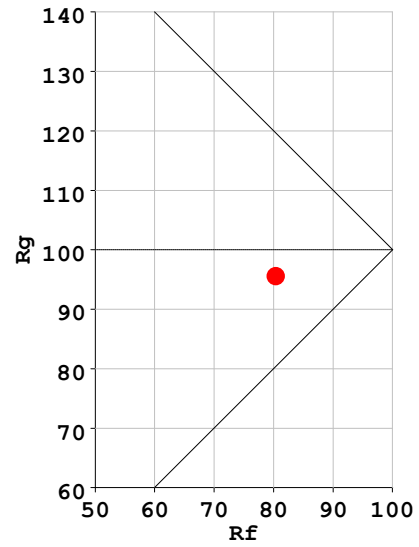
TLCI: TLCI = ---

SPECTRAL POWER DISTRIBUTION COMPARISON

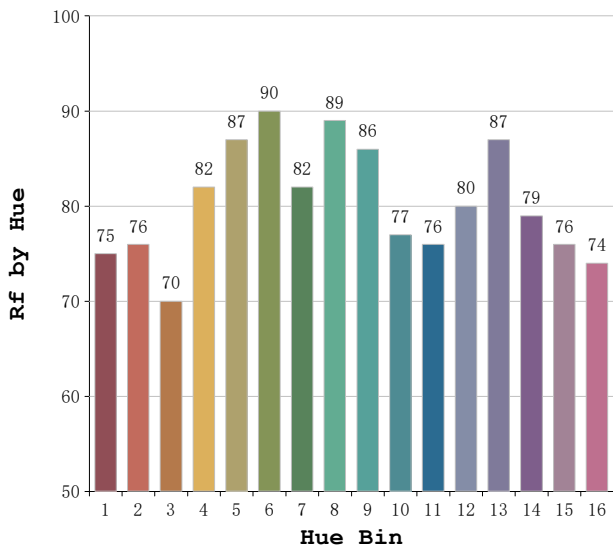
Rf: 80 CCT: 4161 K u': 0.2230
 Rg: 96 Duv: -0.0010 v': 0.4974



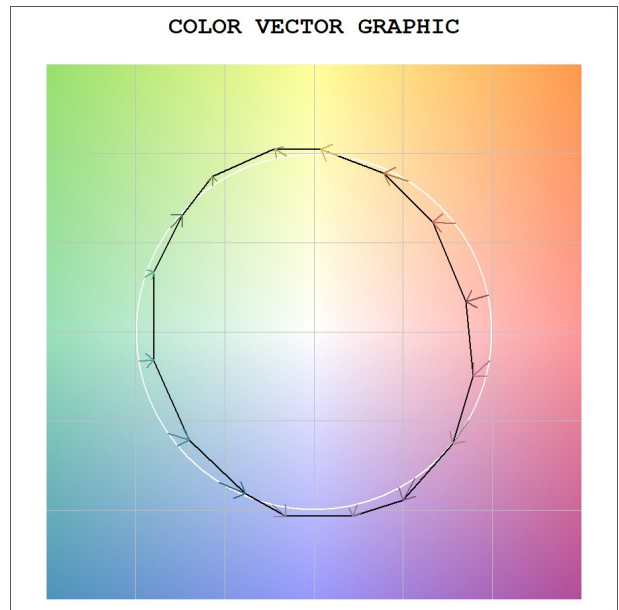
Rf-Rg PLOT

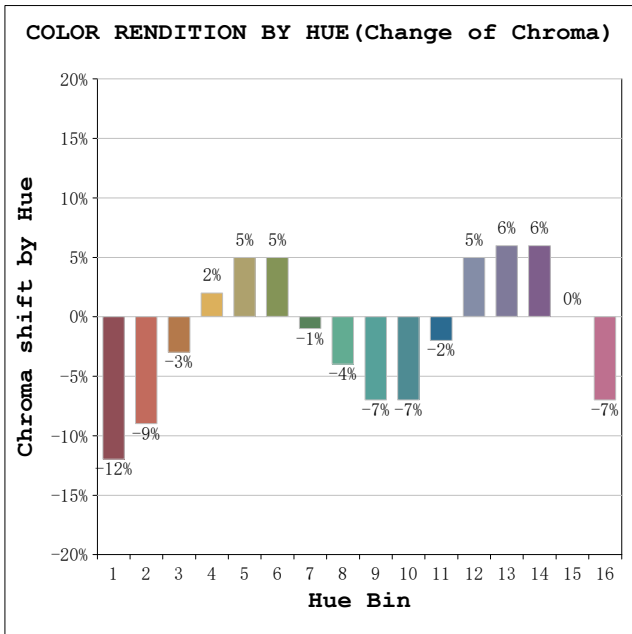


COLOR RENDITION BY HUE (Fidelity Index)



COLOR VECTOR GRAPHIC





HUE ANGLE ANALYSIS

Hue Bin	Hue Angle	Rf	Graphic shift (%)	
			Chroma	Hue
1	0.0° - 22.5°	75	-12	0
2	22.5° - 45.0°	76	-9	8
3	45.0° - 67.5°	70	-3	14
4	67.5° - 90.0°	82	2	10
5	90.0° - 112.5°	87	5	6
6	112.5° - 135.0°	90	5	-2
7	135.0° - 157.5°	82	-1	-8
8	157.5° - 180.0°	89	-4	-3
9	180.0° - 202.5°	86	-7	1
10	202.5° - 225.0°	77	-7	10
11	225.0° - 247.5°	76	-2	16
12	247.5° - 270.0°	80	5	9
13	270.0° - 292.5°	87	6	-3
14	292.5° - 315.0°	79	6	-12
15	315.0° - 337.5°	76	0	-15
16	337.5° - 360.0°	74	-7	-9